



£165,000

Greenwood Avenue, Mansfield  
Woodhouse, Mansfield,

Welcome to **BuckleyBrown**, where every home is carefully presented, so you can explore with clarity and confidence.

**BuckleyBrown**  
ESTATE AGENTS

"Spacious three-bedroom home is an excellent opportunity for buyers looking for a property they can move straight into whilst adding their own personal style over time. With a modern kitchen and bathroom, generous outdoor space, extensive workshop facilities and off-road parking, this home offers fantastic value and versatility."

- Anna, Valuer



## READY FOR IT'S NEXT CHAPTER

Offered to the market with no upward chain!

This spacious three-bedroom home presents a fantastic opportunity for buyers looking to move straight in whilst adding their own personal style over time. Benefiting from a modern kitchen and bathroom, off-road parking and a versatile rear garden with excellent outdoor storage, this property is ready for its next chapter.



## THE FINER DETAILS

***Offered with the advantage of no upward chain, this well-maintained three-bedroom home is ready for its next owners to move straight in and make it their own.***

With modern essentials already in place and scope to personalise the décor to suit your own taste, it presents an exciting opportunity for first-time buyers, families or investors alike.

The ground floor comprises a welcoming living room, providing a comfortable space to relax and unwind, alongside a modern fitted kitchen offering ample storage and workspace for everyday living. Completing the ground floor is a contemporary family bathroom, finished to a modern standard and ready to enjoy from day one.

To the first floor, the property offers three well-proportioned bedrooms, including two generous double bedrooms and a spacious single, providing flexible accommodation for families, guests or those working from home.

Outside, the property continues to impress with off-road parking for two vehicles to the front. The enclosed rear garden has been thoughtfully arranged into three distinct areas, creating a versatile outdoor space for all to enjoy. The first section features low-maintenance astro turf and access to a substantial workshop, cleverly divided into two separate areas, making it ideal for storage, hobbies or a home workspace. Beyond this, a beautifully positioned pergola creates the perfect setting for outdoor dining, entertaining or simply relaxing, complemented by a lawned area. At the top of the garden, you'll find a further storage shed, providing even more practicality, all enclosed by fencing to create a private and secure environment.

Combining spacious accommodation, modern fixtures and excellent outdoor space, this wonderful home offers the perfect opportunity to move straight in whilst adding your own personal touch over time.





**BuckleyBrown**  
ESTATE AGENTS







## LIFE IN MANSFIELD WOODHOUSE

***Mansfield Woodhouse is a popular and well-established suburb located to the north of Mansfield town centre, offering a pleasant residential setting with a strong sense of local character.***

Combining everyday convenience with access to green spaces, the area appeals to a wide range of buyers seeking a balance between town living and community atmosphere.

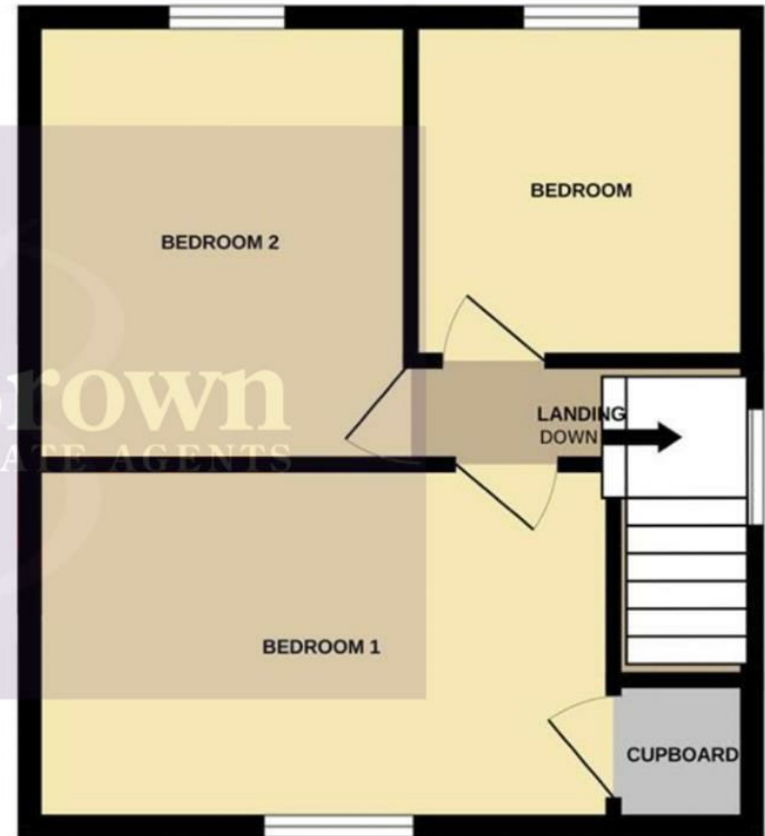
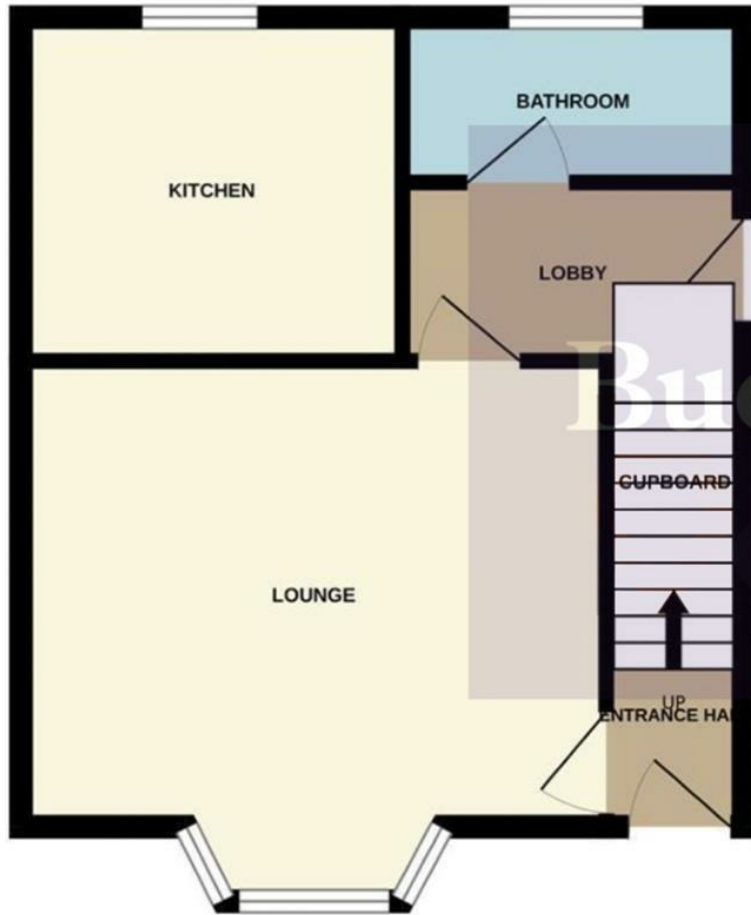
The area itself has a proud heritage and a welcoming feel, centred around its historic High Street and traditional market place. Residents benefit from a variety of local amenities, including independent shops, supermarkets, schools and healthcare facilities, along with a selection of cafés, pubs and community services. This well-served environment makes Mansfield Woodhouse particularly attractive to families, first-time buyers and those looking to remain within an established community.

Surrounded by attractive countryside and green spaces, Mansfield Woodhouse is well suited to those who enjoy outdoor living. Nearby parks, woodland areas and open countryside provide opportunities for walking, cycling and recreation, while the wider Sherwood Forest area is easily accessible for longer countryside outings.



GROUND FLOOR

1ST FLOOR



BuckleyBrown  
ESTATE AGENTS

## Key Features

Offered with no upward chain

---

Modern fitted kitchen

---

Contemporary family bathroom

---

Spacious living room

---

Two double bedrooms - spacious third bedroom

---

Off-road parking for two vehicles

---

Large workshop split into two sections

---

Excellent outdoor entertaining space

---

Council Tax Band - A

---

EPC Rating - C

---

**BuckleyBrown**  
ESTATE AGENTS



These particulars are intended as a guide only and do not form part of any offer or contract. All descriptions, measurements, images and plans are provided for illustration purposes and should not be relied upon as statements of fact. Prospective purchasers should satisfy themselves as to the accuracy of the information. Buckley Brown Estate Agents accept no liability for any loss arising from reliance on these details.

© Buckley Brown Estate Agents 2026. All rights reserved.

Exceptional homes deserve  
exceptional representation.

Let's Chat.

01623 633633

[mansfield@buckleybrown.co.uk](mailto:mansfield@buckleybrown.co.uk)

[buckleybrown.co.uk](http://buckleybrown.co.uk)

**BuckleyBrown**  
ESTATE AGENTS